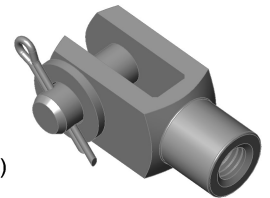


(2:1)



- 1- Clevis (CV111)
- 2- Bolt (CB306)
- 3- Flat Washer (CA506)
- 4- Cotter Pin (CA406)

No sharp ends, no burrs, no significant surface defects.  
General Tolerances DIN ISO 2768-medium

(C) MK Material Oto. San. ve Tic. Ltd. Şti. All rights reserved.

Mea.	Tolerance	T. Max. Dim.	T. Min. Dim.	Material	Note
				-	-
	Name	Date	Signature	Plating	Quality control: ( ) Product accepted. ( ) Product rejected. ( ) Product accepted conditionally. Date:
Drawed By				-	
Checked By					
Approved By					
Scale	Drawing No / Company Name			Rev. No	
1:1	CC311			01	